



Expanding classrooms. Strengthening communities.

Funding Provided By



The MAISD Regional Mathematics and Science Center

1001 Wesley Avenue, Muskegon, MI 49443
Phone: (231) 767-7318 Fax: (231) 773-0505

Visit these websites for more information

www.muskegonisd.org/departments/mathscience/
www.glft.org/StewardshipInitiative/GLSloverview.pdf

It is the policy of the Muskegon Area Intermediate School District (MAISD) that no staff member, candidate for employment, program participant, or recipient of services shall experience discrimination on the basis of race, color, religion, national origin, creed or ancestry, age, gender, height, weight, marital status, or disability. The MAISD is an equal opportunity employer. Inquiries related to issues of discrimination on the basis of disability should be directed to the Assistant Director for Special Education at (231) 767-7249. All other discrimination inquiries or requests for special accommodations to participate in a program, event, or activity should be directed to the Human Resources Program Director at (231) 767-7213.

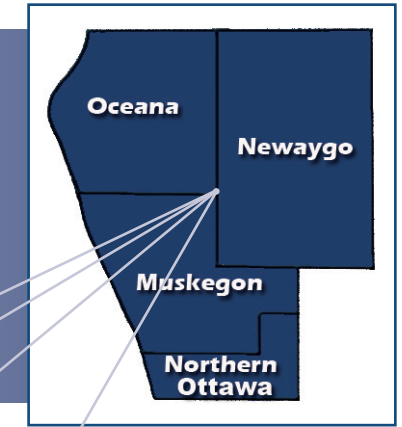
West Michigan Great Lakes Stewardship Initiative



The MAISD Regional
Mathematics & Science Center

Initiative Takes Learning Into the Community

Students achieve and become good stewards



West Michigan GLSI Service Area

The MAISD Regional Mathematics and Science Center recently received funding through the Great Lakes Stewardship Initiative (GLSI) to establish a regional “hub” for place-based education and environmental stewardship.

The GLSI is a powerful model that connects schools with their communities to create authentic learning experiences for students through activities that have a lasting impact on the environment. Outcomes of the GLSI include meaningful learning; a supportive school culture; sustained partnerships between schools and community groups; greater appreciation of environmental issues; and more frequent and effective acts of stewardship. To learn more about the GLSI, go to www.gltf.org/StewardshipInitiative/GLSIOverview.pdf.

The West Michigan GLSI’s core region includes Muskegon, Newaygo, Oceana, and northern Ottawa Counties. Within this region, the initiative provides professional development for teachers to facilitate inquiry-based learning and problem solving. It also fosters collaboration between schools and communities to engage students in real-world environmental



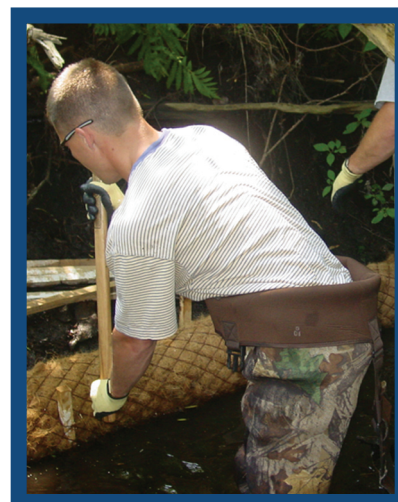
issues where they live. The resulting hands-on learning experiences are designed to increase student achievement and help young Michigan residents become lifelong advocates for the Great Lakes.

Students

Many studies of place-based education—from schools representing a wide geographic and demographic spectrum, in both rural and urban settings—have shown positive outcomes for students, including:

- ◆ Improved achievement in core content areas
- ◆ Increased enthusiasm for learning
- ◆ Improved ability to make connections and transfer knowledge from familiar to unfamiliar contexts

Students of teachers participating in the West Michigan GLSI are involved through their school’s regular instructional program. An on-going, formal evaluation examines and documents the impact of the GLSI on students.



Teachers

The West Michigan GLSI is committed to professional development that is based on best practices and grounded in research. School-based teams of teachers participate in professional development (offering SB-CEU/graduate credit) that builds their content knowledge and diversifies their instructional strategies. The hub’s model of professional development involves sustained, year-round learning, including a summer institute, hands-on field experiences at local sites, and discussions with local experts.



The hub’s network of educational and community groups provides additional support for teaching and learning by offering valuable and relevant resources and expertise. Teachers partner with experts in the community to connect classroom curricula to vital community projects in which students can make a valuable contribution while they learn.

Community Partners

As participants in the West Michigan GLSI, community partners receive both valuable assistance in solving problems and significant support to accomplish their missions. Their projects and focus issues enjoy increased visibility as student involvement makes more people aware of their efforts. At the same time, community partners become substantial contributors to the education of the community’s young people.

Are You Ready?

Educators and members of community organizations are invited to learn more about joining this exciting venture by contacting Jennifer Haase at the Muskegon Area Intermediate School District (MAISD) Regional Mathematics and Science Center at (231) 767-7318.

